



SoundEar® 3

VERSION: 5.3.4

WIRELESS SETUP – MANUAL UK

MODEL 300

MODEL 310

MODEL 320

MODEL 310XL



TABLE OF CONTENTS

INTRODUCTION	3
CONFIGURING THE WIRELESS SETUP	3
• Configure the receiver dongle	3
• Configure the SoundEar®3 devices	5
• Registered devices	8
DEFINE SETTINGS	10
• 2-way connection with wireless dongles	10
• Light day - 300, 310 and XL	11
• Light night - SoundEar3-300, -310 and XL	12
• Noise levels - SoundEar3-320	13
• Mini display	15
• Alarm e-mail	16
VIEW LIVE MEASUREMENTS	18
• Check whether the noise limit has been exceeded in live measurement view	20
• View live measurements for a specific device	22
SYSTEM CONFIGURED IN ADVANCE	26

INTRODUCTION

This manual describes the functionalities when using SoundEar®3 with wireless dongles. For a full description of the software functionalities, such as library and generating a noise report, please consult the main manual.

Important: All measurement data is stored via the software.

To collect and log measurements, the SoundEar® software must be up and running.



Amber wireless USB dongle

CONFIGURING THE WIRELESS SETUP

CONFIGURE THE RECEIVER DONGLE

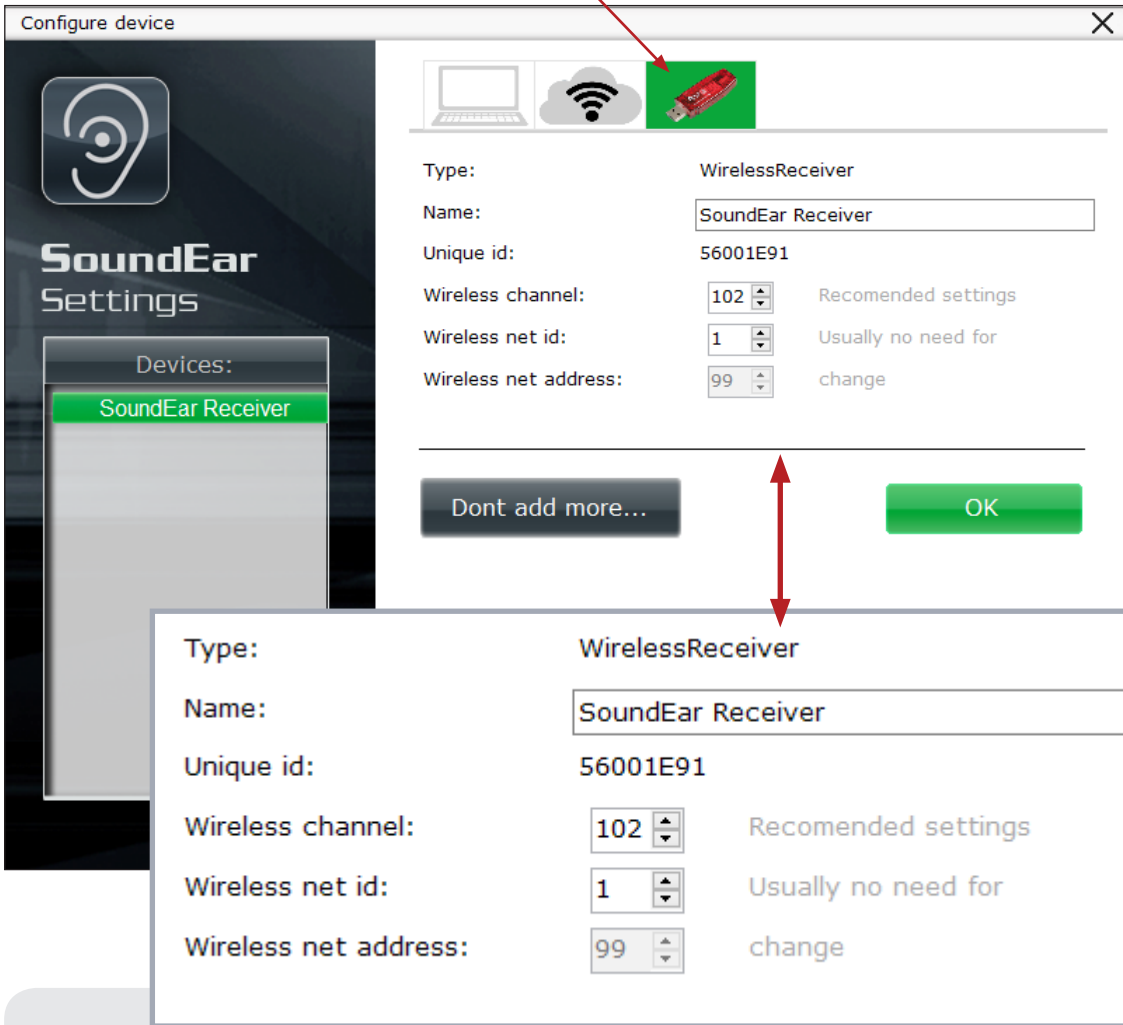
Start out by configuring the wireless dongle that you will be using as a receiver:



1. Open the SoundEar® software and insert the wireless dongle that you want to use as the receiver directly in the PC. This dongle will connect to the remaining wireless dongles in your SoundEar®3 devices and receive measurements from them.

CONFIGURE THE RECEIVER DONGLE

- A pop-up window will appear on your screen. Here, the software has pre-selected the tab for wireless dongle, allowing you to proceed with the configuration of your wireless receiver.



A. Name:

Choose a name for your receiver.

B. Unique id:

The unique ID of the wireless dongle.

C. Wireless channel:

By default, the system will use the wirelesschannel 102. If you have more than one system running, you can switch to a different channel. Please note that you will need to configure the remaining wireless dongles in the system to that same channel.

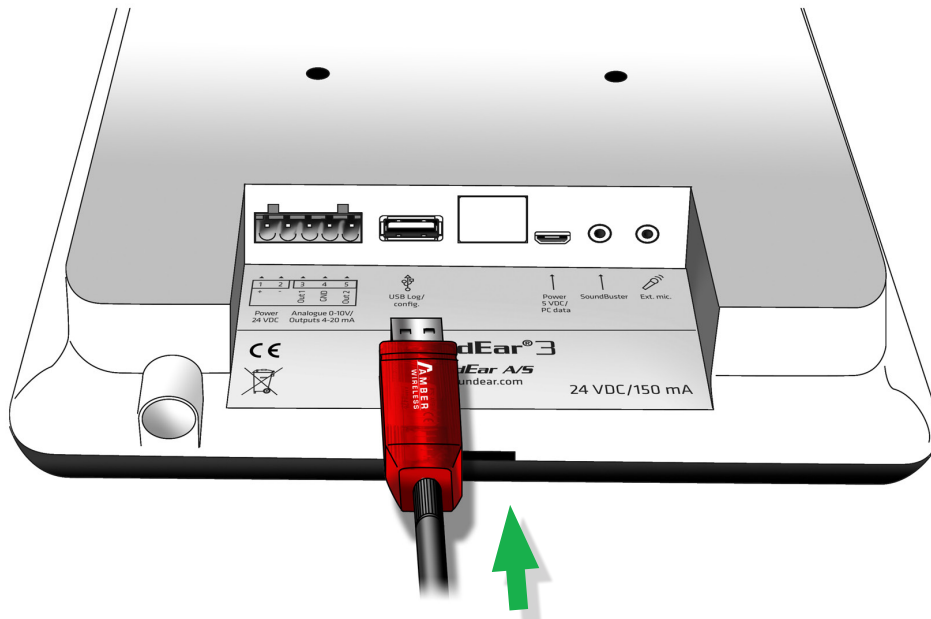
D. Wireless net id:

E. Wireless net address:

ID for the wireless dongle in the SoundEar® software.

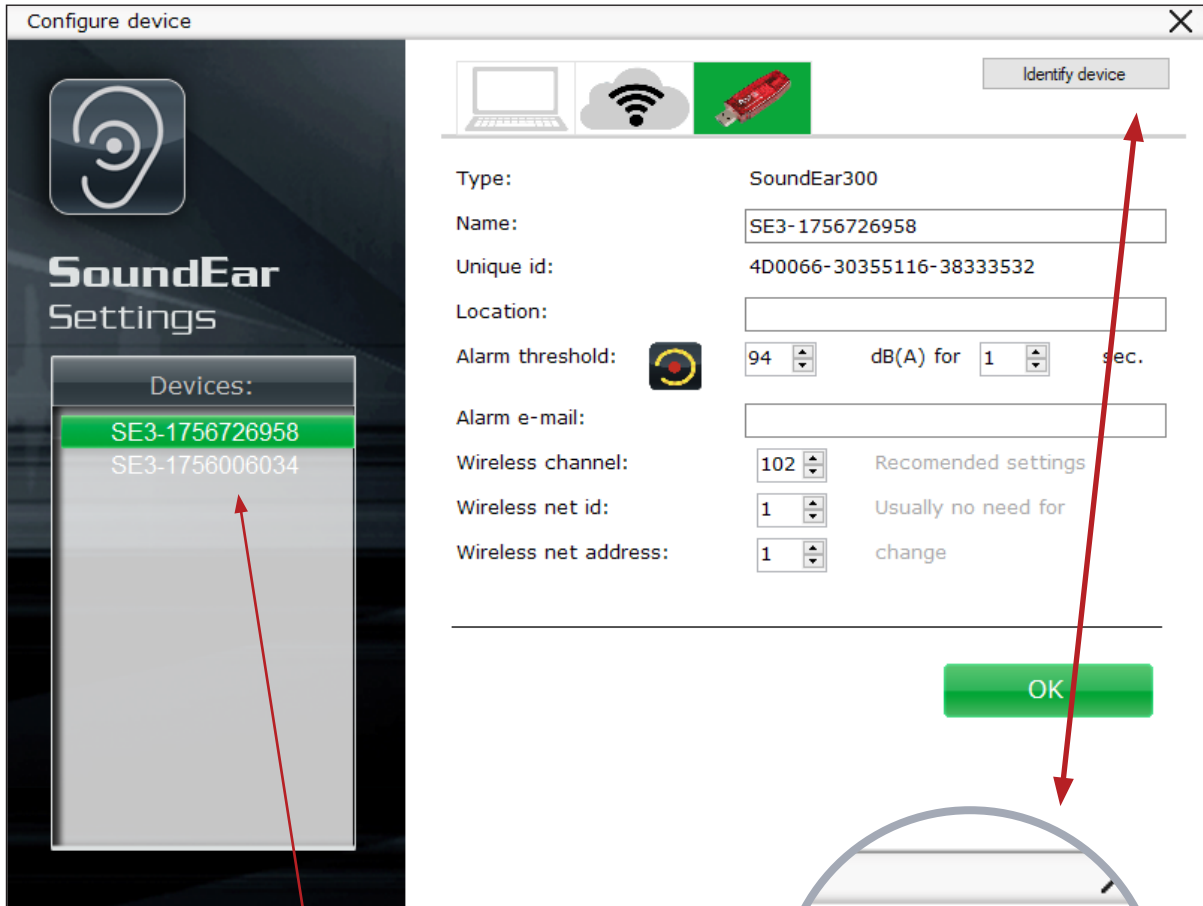
- Click 'OK' to add the receiver to the SoundEar® software.

CONFIGURE THE SOUNDEAR®3 DEVICES



1. Insert the wireless dongle in the USB port on your SoundEar®3 device and connect the SoundEar®3 device to power. If you have multiple SoundEar®3 devices, you can proceed and do the same for the remaining devices. Or you can do the configuration of the devices one by one.

CONFIGURE THE SOUNDEAR®3 DEVICES



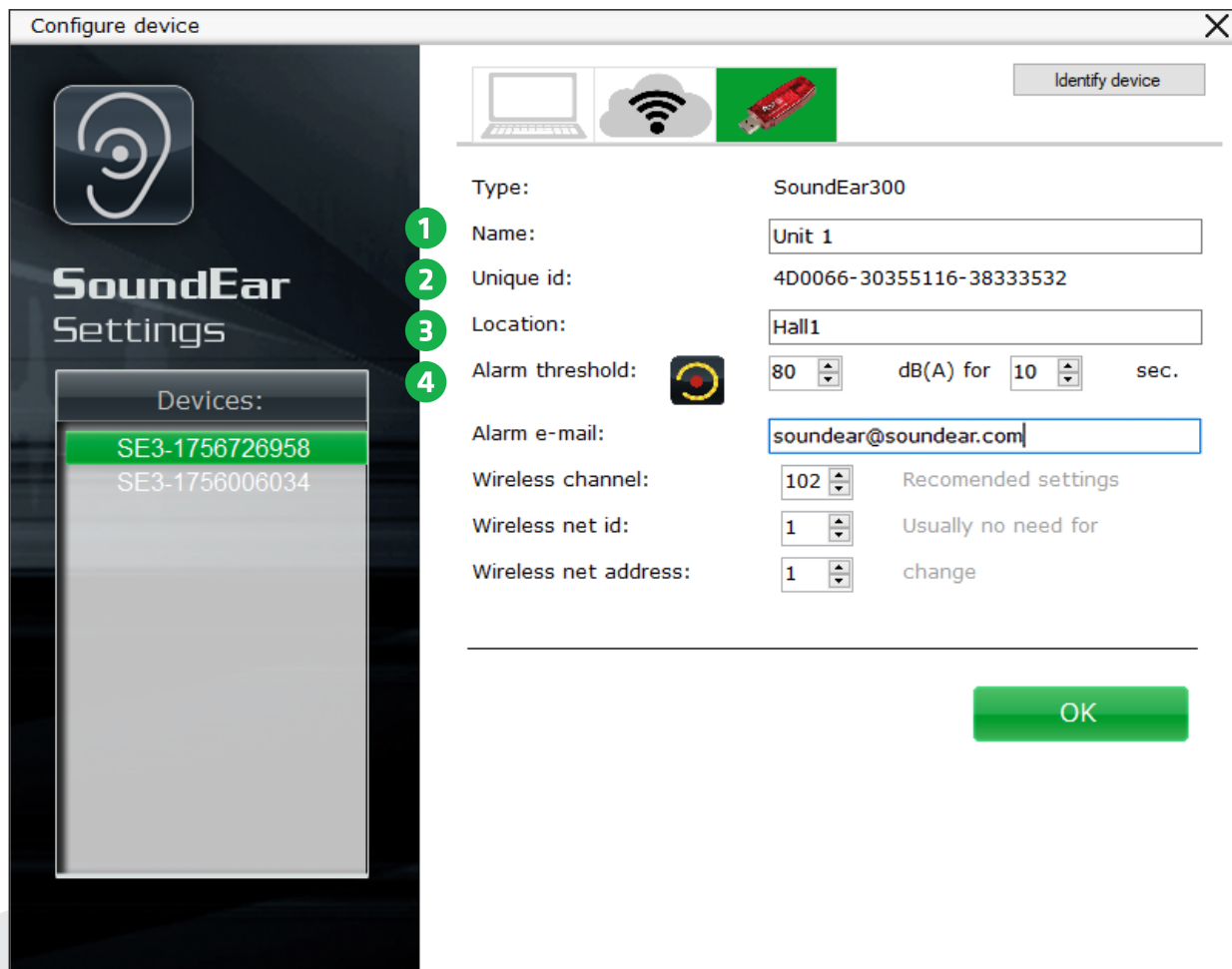
2. Open the SoundEar® software with the receiver dongle connected to your PC. A pop-up window will appear on your screen with the SoundEar®3 device(s) listed on the left. If you are configuring your devices one by one, only one device name will appear in the list at a time, making it easier to keep track of things.

3. If you are configuring all of your SoundEar®3 devices at once, you can click the button 'Identify device' in the upper right corner to see which device you are currently configuring.

The ID will start to flash in the mini display of the SoundEar®3 device that you are currently configuring.



CONFIGURE THE SOUNDEAR®3 DEVICES



1. Name:
Name your device.

2. Unique ID:
Unique ID as shown in the software.

3. Location:
Location of device.

4. Alarm threshold/e-mail:
Set the alarm threshold and enter e-mail address, if you want to receive an alarm e-mail when noise levels are exceeded.

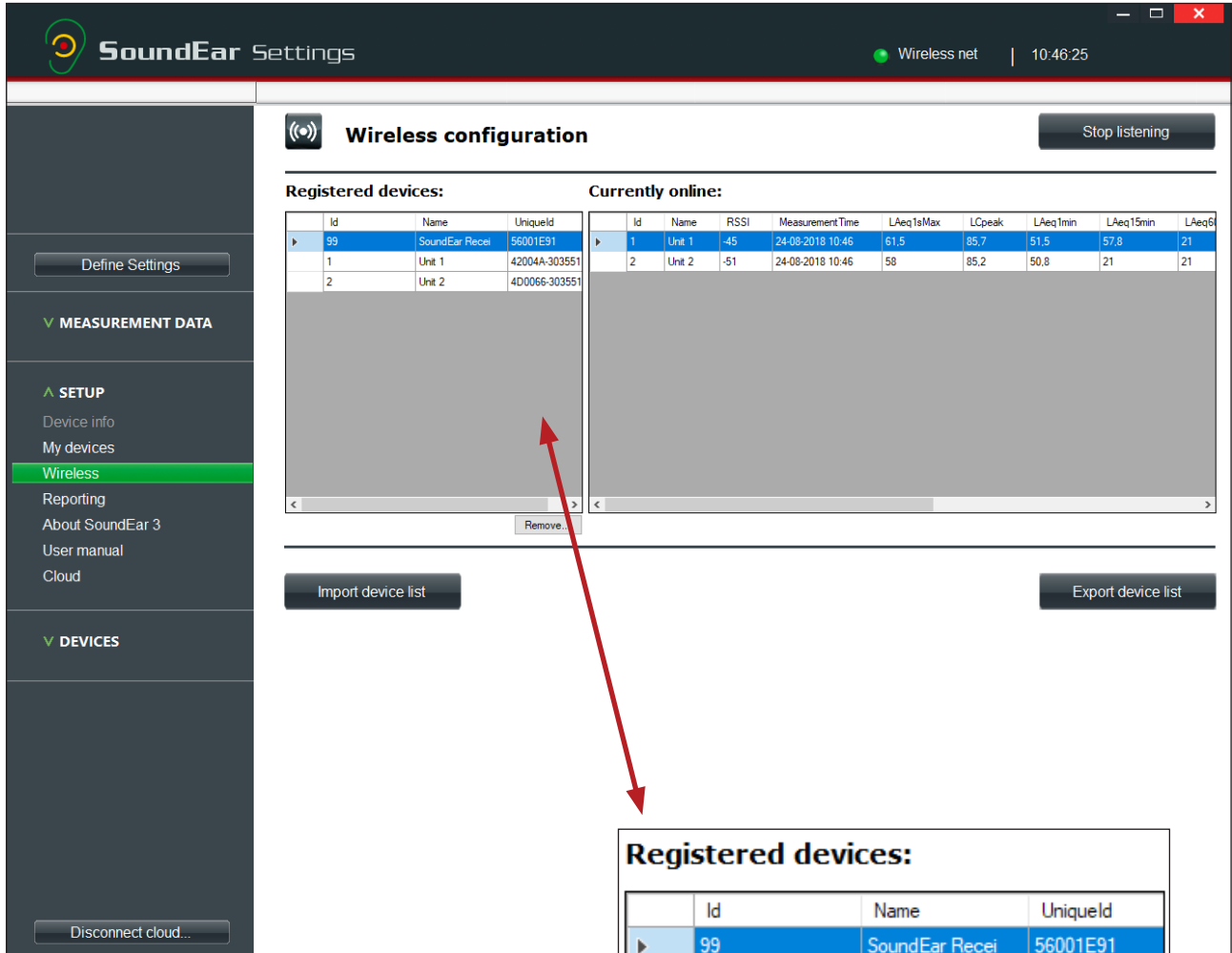
The settings for wireless channel and net ID are recommended and should not be changed, unless you have more than one system.

4. Press 'OK' to save your configuration of the software and start receiving measurements. Repeat these steps for the remaining SoundEar®3 devices.

CONFIGURING THE WIRELESS SETUP

REGISTERED DEVICES

You can view all registered devices in the software. Go to the menu 'Setup' and select 'Wireless'.



In the first column with 'Registered devices', you can see what units are configured to the SoundEar® software along with their ID, name and unique ID.

REGISTERED DEVICES

The second column shows what devices are currently online and sending measurements to the SoundEar® software.

Currently online:

	Id	Name	RSSI	MeasurementTime	LAeq1sMax	LCpeak	LAeq1min	LAeq15min	LAeq6
▶	1	Unit 1	-45	24-08-2018 10:46	61,5	85,7	51,5	57,8	21
	2	Unit 2	-51	24-08-2018 10:46	58	85,2	50,8	21	21

Registered devices:

	Id	Name	Uniqueld
	99	SoundEar Recei	56001E91
▶	1	Unit 1	42004A-303551
	2	Unit 2	4D0066-303551

Remove...

You can remove a device from the network by selecting the device in the left column and clicking 'Remove'.

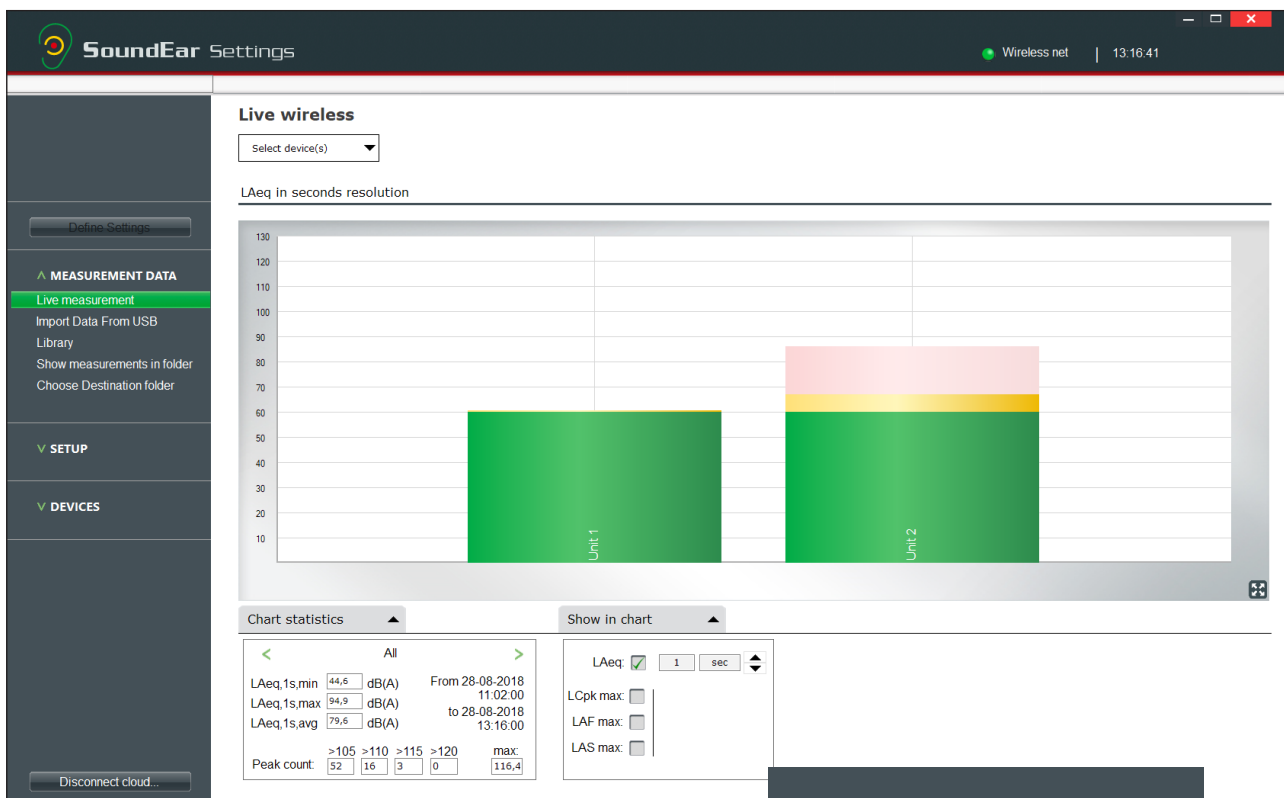
NOTE! If you wish to add the SoundEar®3 device to the SoundEar® software again, you must do a factory reset of the SoundEar®3 device.

DEFINE SETTINGS

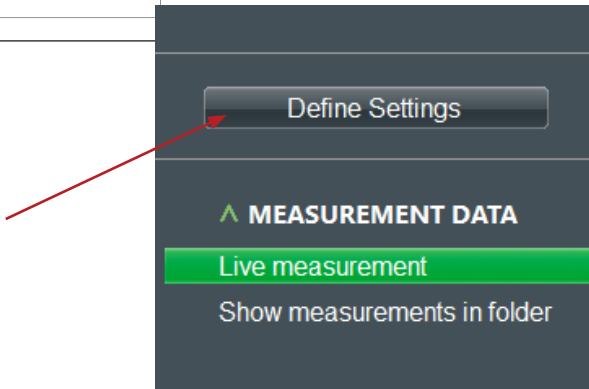
2-WAY CONNECTION WITH WIRELESS DONGLES

With wireless dongle connectivity, you have a 2-way wireless connection with your SoundEar®3 device. This means that you can adjust your device settings via the wireless connection, without having to connect the SoundEar®3 device physically to your computer. This makes it a lot easier when you want to change your light or alarm settings. You can do this wirelessly and directly from the software.

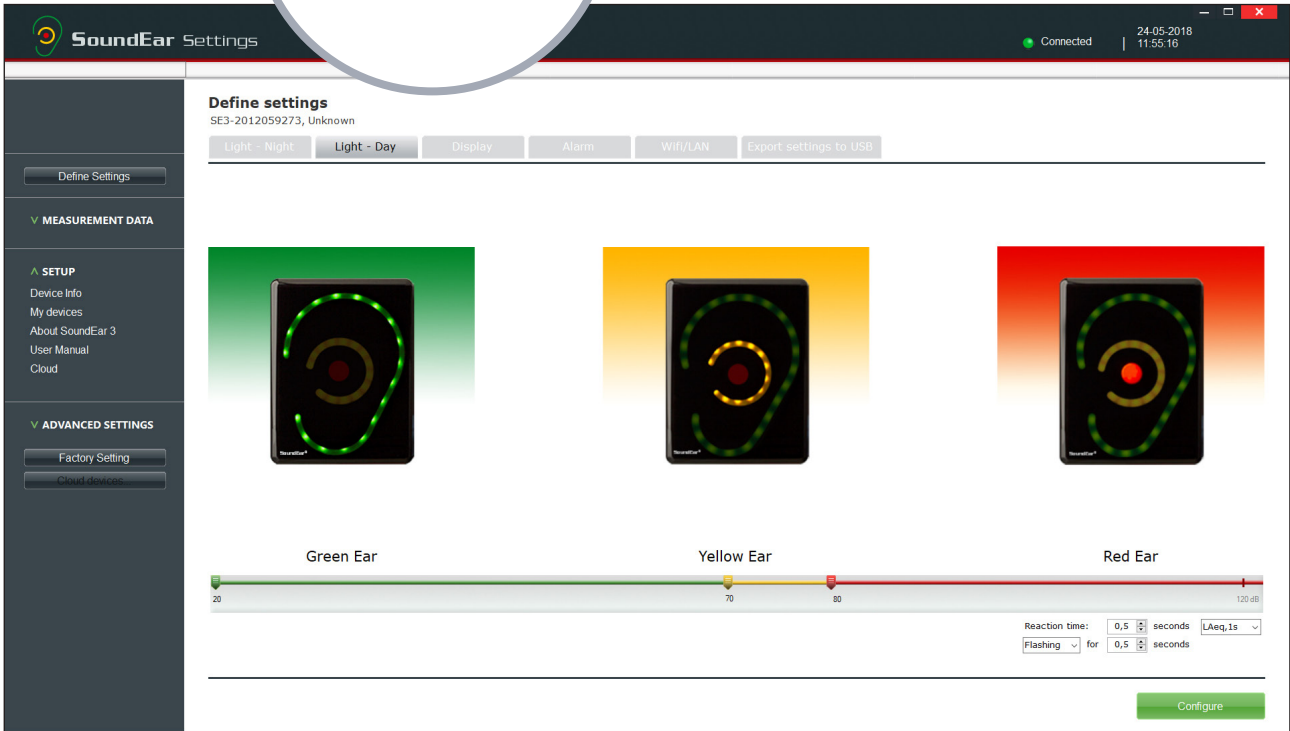
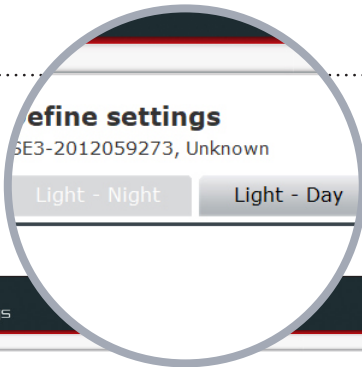
1. Double-click the column for the SoundEar®3 device that you want to configure.



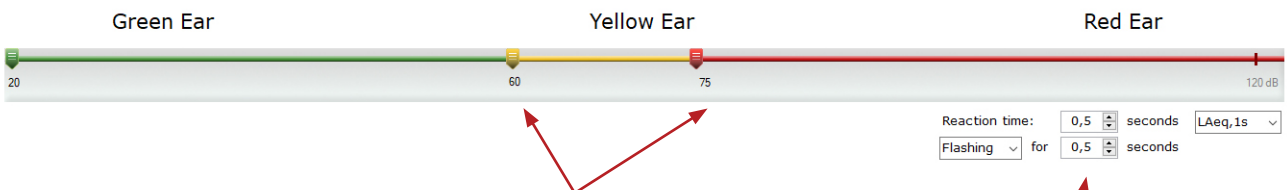
2. Click on 'Define Settings' in the left-side menu.



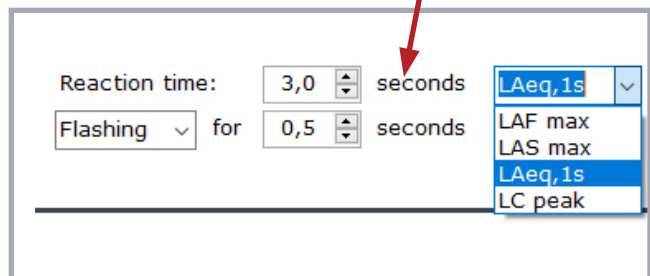
LIGHT DAY – 300, 310 AND XL
Go through the different tabs to define your settings.



11



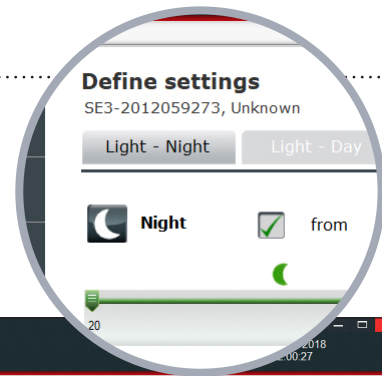
1. Use the slider to set the limit for the green, yellow and red ear. For now, we will set the “yellow ear” to 60 dB and red to 75 dB.
2. Select how long the noise level should be exceeded before the red ear turns on. Here, we have selected 3 sec.
3. As a standard, the visual alarm is measured in LAeq1s. If needed, you can also select LAF max, LAS max or LC peak. Here, we will select LAeq 1s.
4. Then select whether the red ear should flash or just be lit, and for how long.
5. Click “Configure” to save your settings.



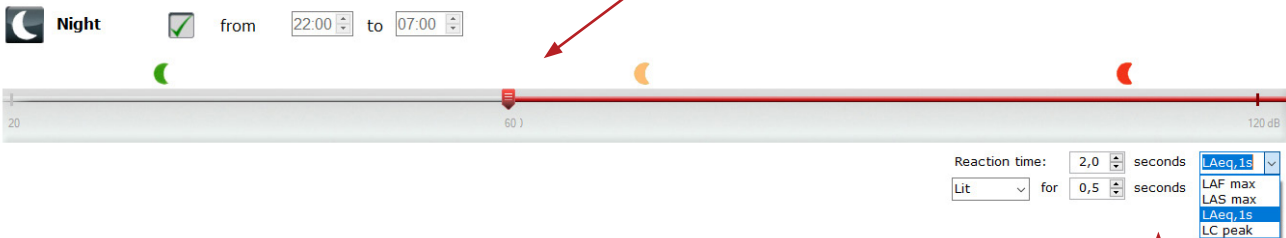
DEFINE SETTINGS

LIGHT NIGHT – 300, 310 AND XL

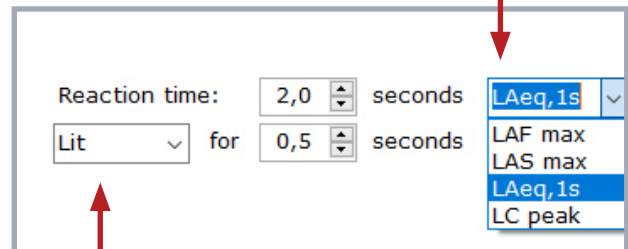
If needed, you can create an alternate light setting during night time. This allows you to turn off the light emanating from the device, preventing it from disturbing people while they sleep.



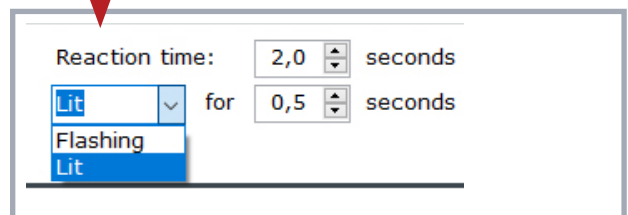
1. Check the 'Night' box and set the time period for your night settings. In this example, it is set to start at 22:00 in the evening and end at 07:00 in the morning.
2. Set the limits for green, yellow and red ear using the slider. In this example, we will set them all to 60 dB. This allows you to turn off the light emanating from the device, preventing it from disturbing people while they sleep.



3. Select how long the noise level should be exceeded before the red ear turns on. Here, the whole ear will light up if the noise exceeds 60 dB for more than two seconds.



4. You can also select whether you want the red alarm to be lit or flashing and for how long.



5. When you have created your settings, click "Configure".

DEFINE SETTINGS

NOISE LEVEL 320

Now, go to "Live Measurements" and your screen background will show your settings.

SoundEar Settings

Not connect

Define settings

SE3-2011862637, Unknown

Noise Levels Display Alarm Export settings to USB

Noise Levels

Set green, yellow and red settings for your SoundEar 3 and keep track of critical noise levels in the software

Day: 20 75 80 120 dB Reaction time: 0,5 seconds LAeq,1s Flashing for 0,5 seconds

Night: from 22:00 to 07:00 20 60 120 dB Reaction time: 0,5 seconds LAeq,1s Lit for 0,5 seconds

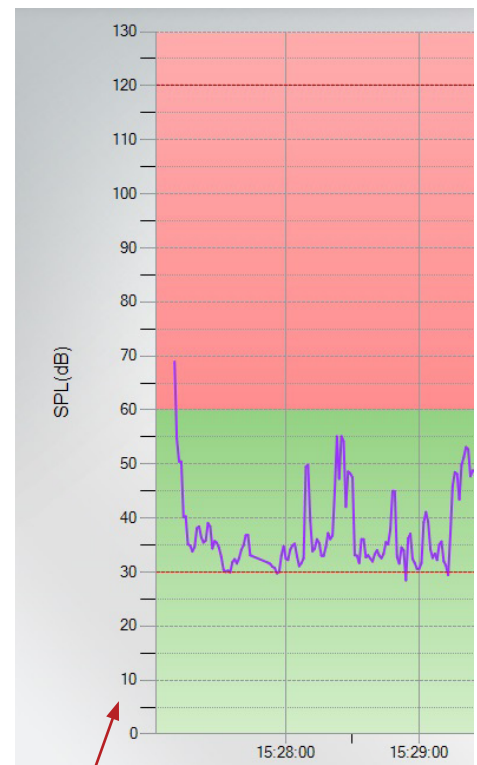
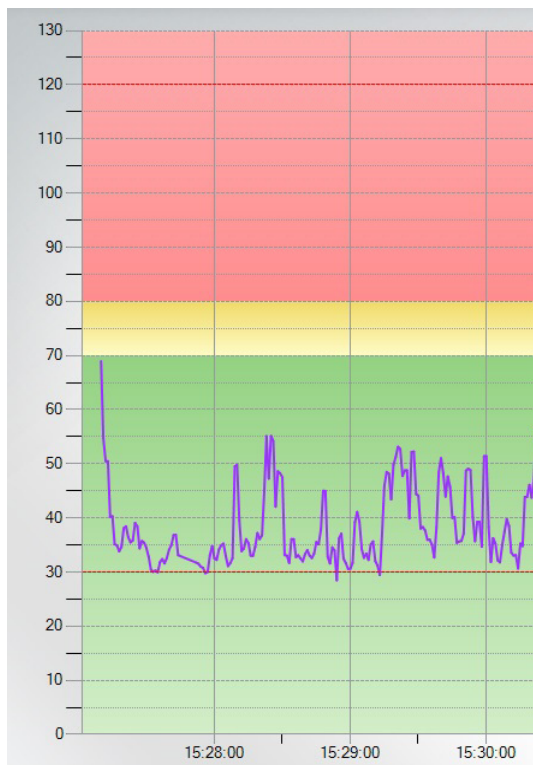
Configure

14

Red:
80 - 120 dB

Yellow: 70 - 80 dB

Green:
20 - 70 dB



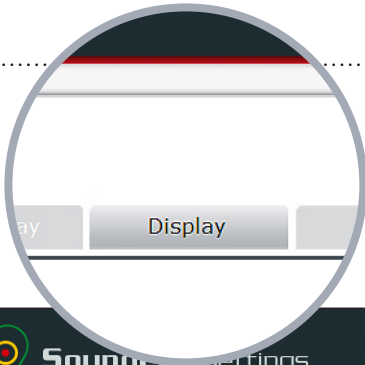
If you want an alternate night setting, check the box 'Night' and create your settings.

After 22:00 your screen will now show your night settings:

- Green: 20 - 60 dB
- Red: 60 - 120 dB

MINI DISPLAY

Select what should be shown in the mini display of your SoundEar®3.



1. Select in the drop-down menu, whether you want the display to show the time, the current noise level in LAeq 1 second, or the alarm level for the red ear. You can also choose to turn the mini display off.

2. If you do not want anyone to be able to change these settings manually on the device, check the 'Locked Display' box.

Locked display: When locked the display cannot be changed manually on the SoundEar3

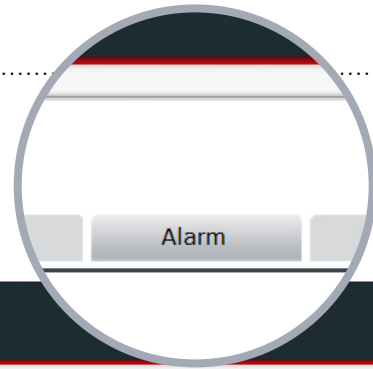
3. When you have made your settings, click 'Configure'.



DEFINE SETTINGS

ALARM E-MAIL

How to get e-mail notifications about critical noise levels – using the 'Alarm' setting:



16

1. Go to the tab 'Alarm' and select the noise limit and duration at which the system will send an e-mail notification. In this case, 60 dB for more than 20 seconds.
2. Enter the e-mail address(es) that you want the notifications sent to.

ALARM E-MAIL

Alarm (e-mail)

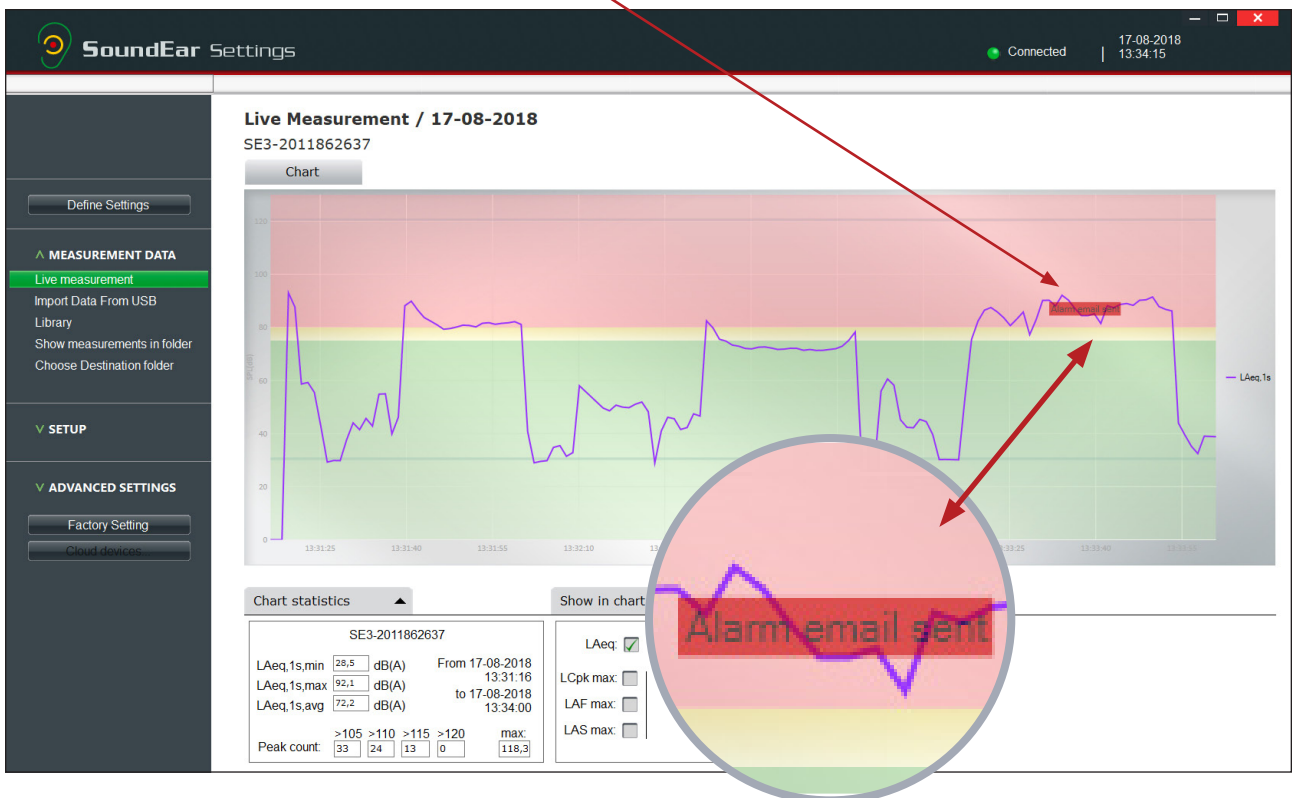
Receive an e-mail, when noise levels are critical:

Alarm level: 60 dB for 20 sec.

E-mail:

Show on Live measurements

3. Check the 'Show on live measurements' box, if you want the alarm level to show in the 'Live Measurement' view for your device:



4. When you have created your settings, click 'Configure'.

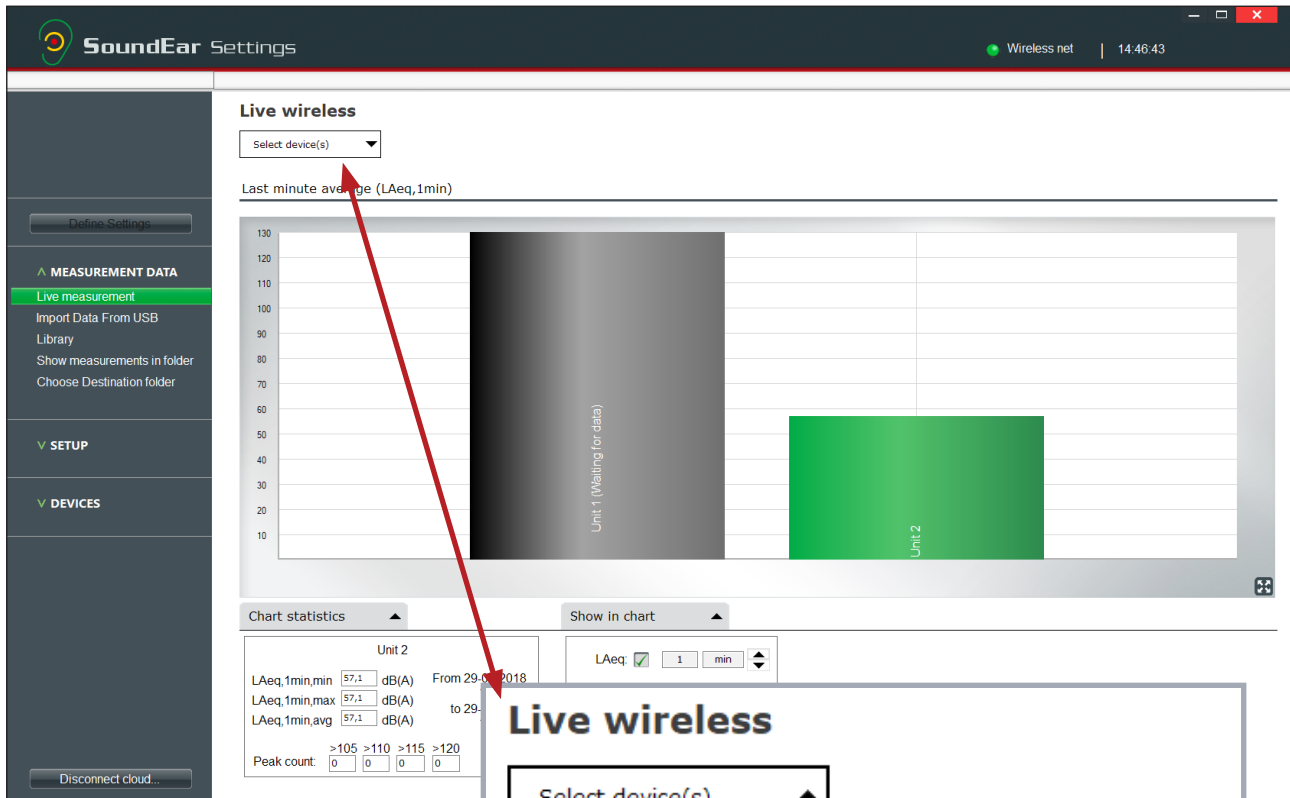


NOTE: The software needs to be running to generate an alarm e-mail.

VIEW LIVE MEASUREMENTS

To check whether the SoundEar® software is collecting measurements, go to the menu 'Measurement Data' and select 'Live measurement'. The column will switch from grey to green, when the SoundEar® software starts to receive measurements from the SoundEar®3 device.

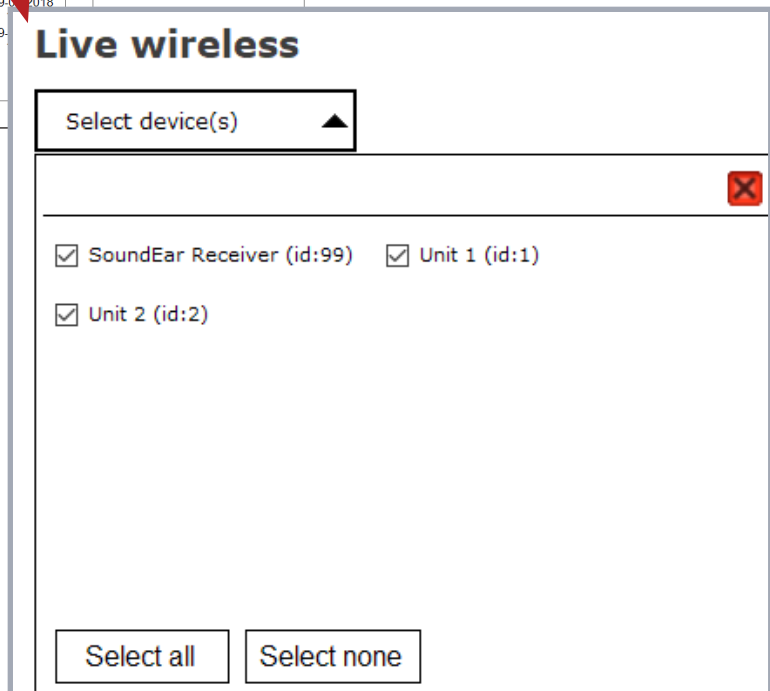
Each column represents a SoundEar®3 device and shows the current noise level as an average over the past minute (LAeq, 1 min).

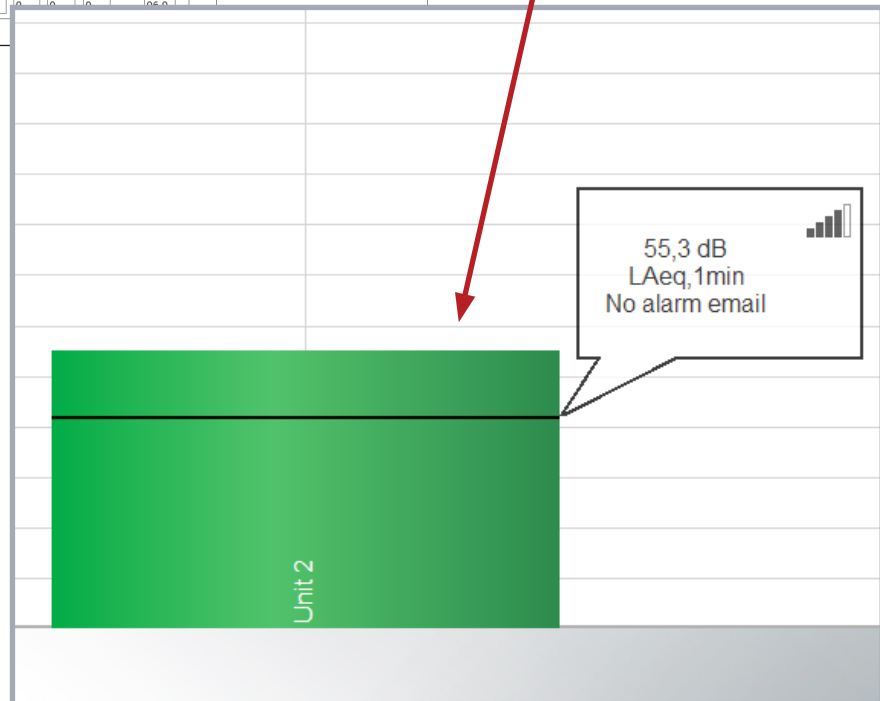
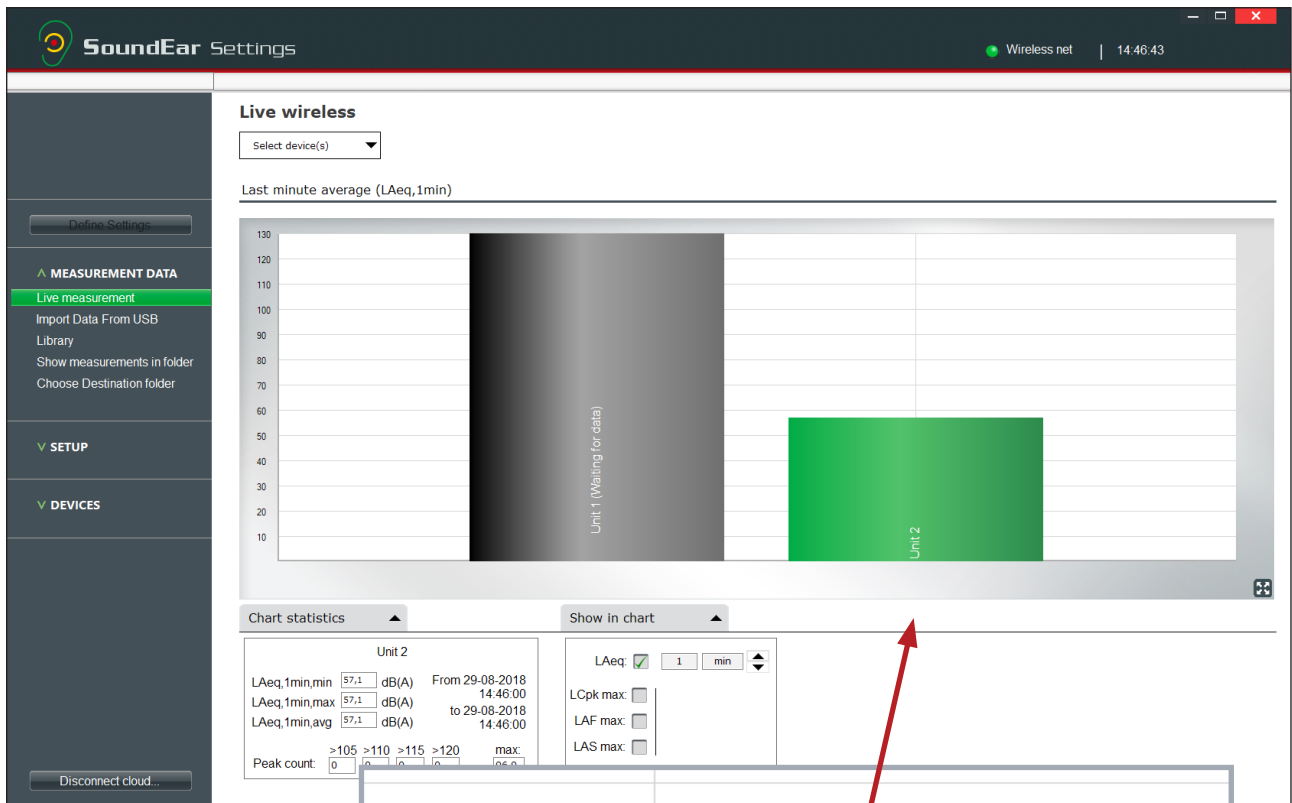


Click on 'Select Device(s)' in the upper left corner to select what devices to see.

NOTE: The software will store all measurements from registered devices, even if you do not choose to have them show in the 'Live Measurement' view.

All measurements are accessible through the menu 'Library' at any time. This way, it is always possible to go back and check your measurements in the library.



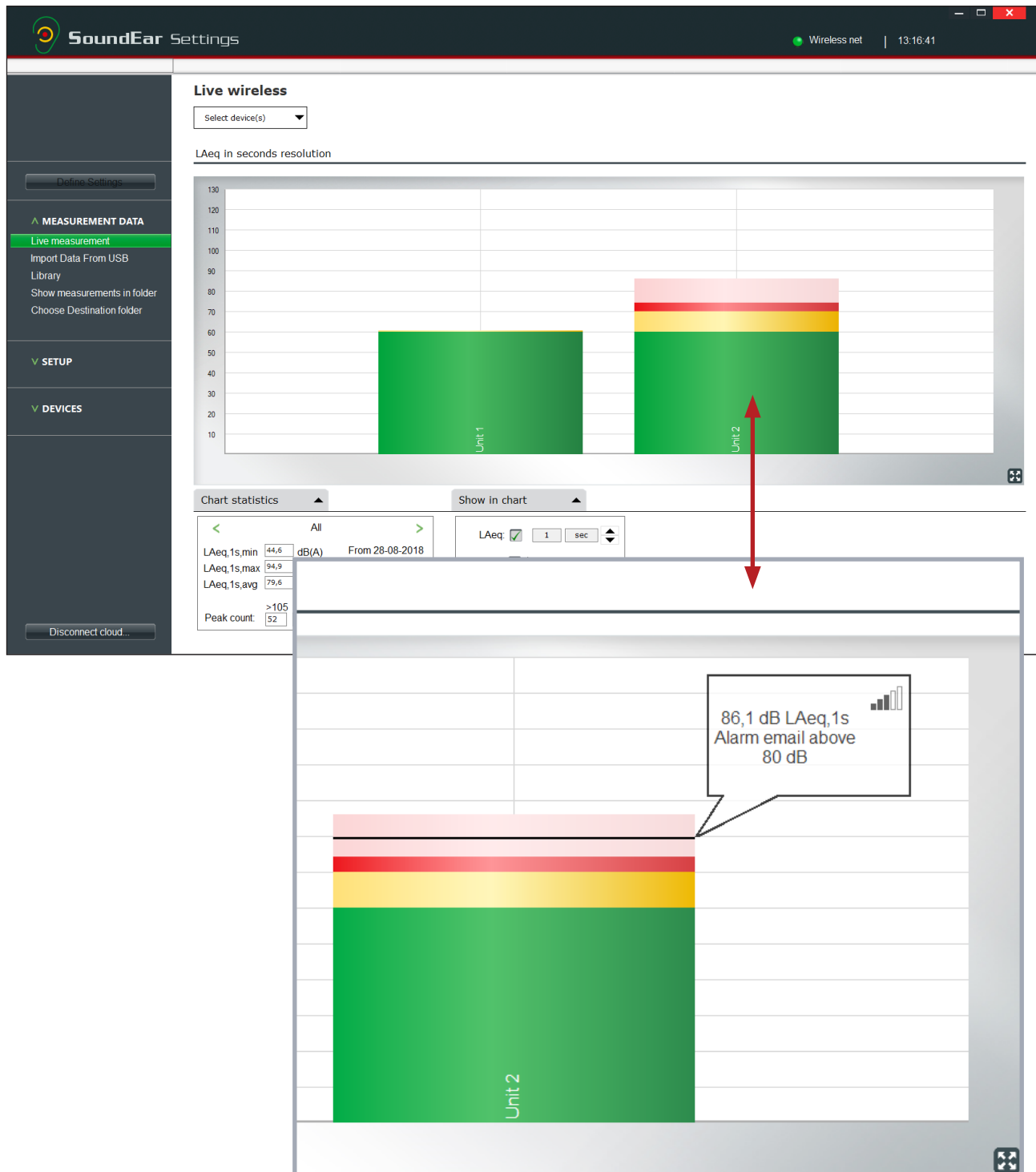


You can check how strong the signal from any given device is, by hovering the mouse cursor over the column.
You can also see whether an alarm has been set.

VIEW LIVE MEASUREMENTS

CHECK WHETHER THE NOISE LIMIT HAS BEEN EXCEEDED IN LIVE MEASUREMENT VIEW

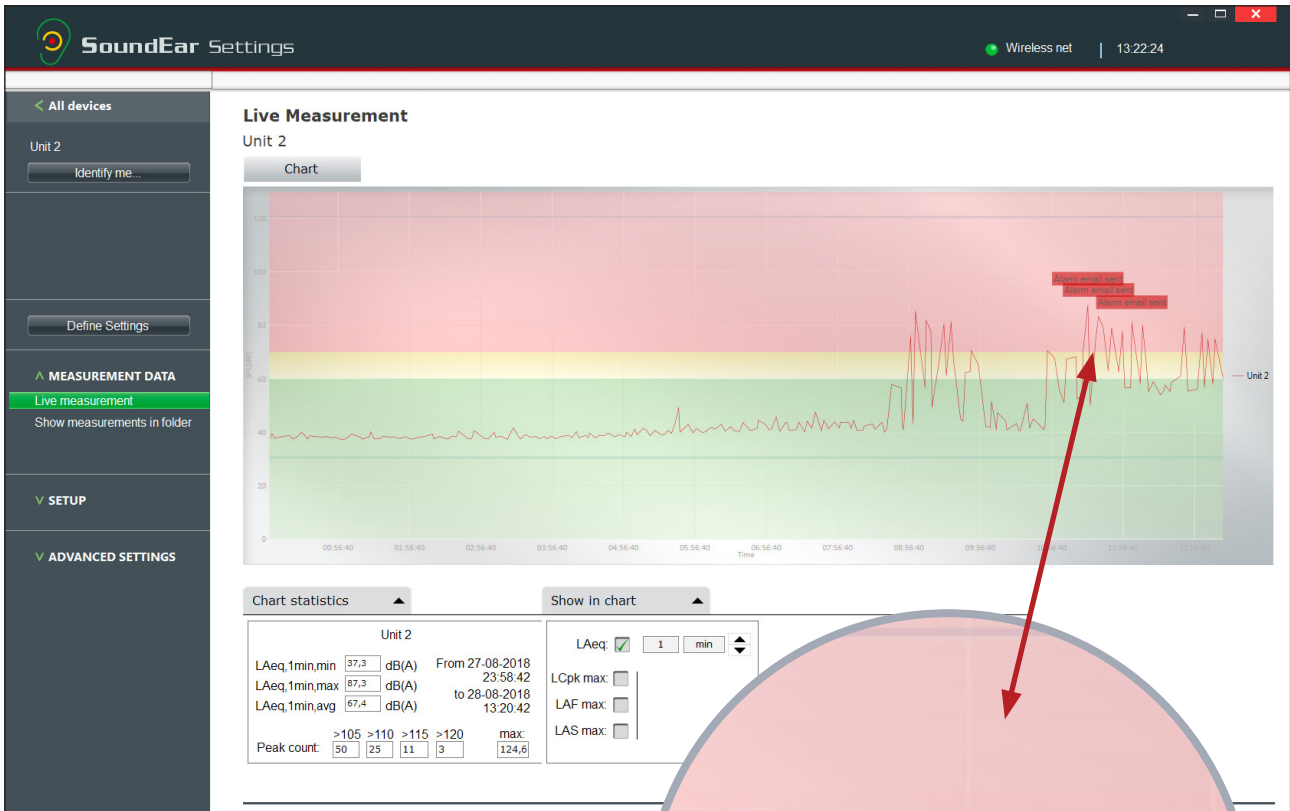
In the 'Live Measurement' view, it is easy to check whether the set noise limit of one of your devices has been exceeded and an alarm e-mail has been sent. If that is the case, the top of the column will have a bright red colour.



Place the cursor over the bright red part of the column to see how high the noise level was.

CHECK WHETHER THE NOISE LIMIT HAS BEEN EXCEEDED IN LIVE MEASUREMENT VIEW

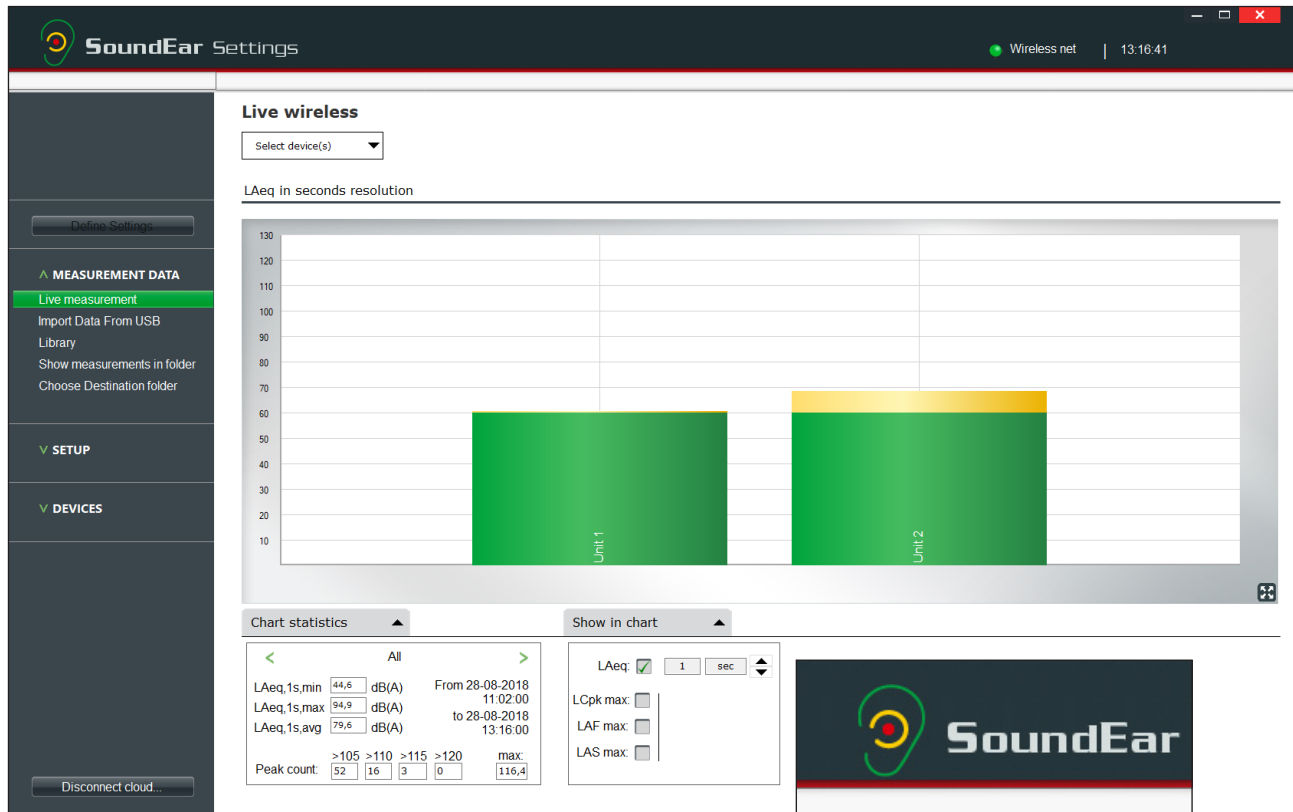
You can double-click the column to check when the noise level was exceeded.



VIEW LIVE MEASUREMENTS

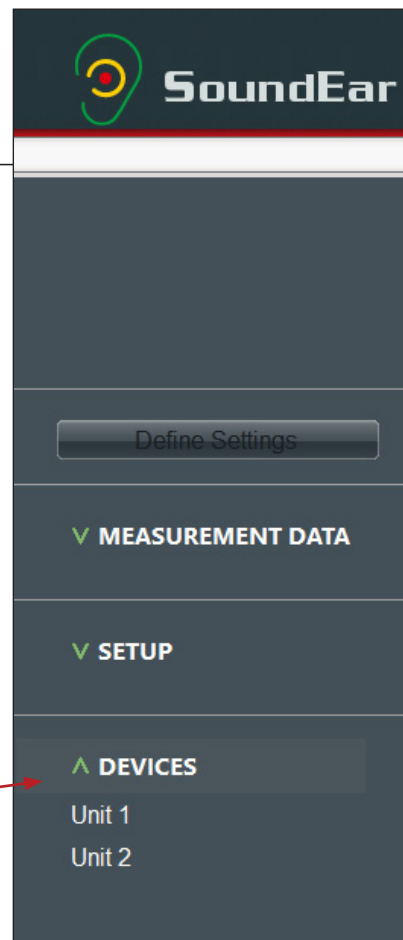
VIEW LIVE MEASUREMENTS FOR A SPECIFIC DEVICE

To view live measurements for a specific device, double-click the column for that specific device.

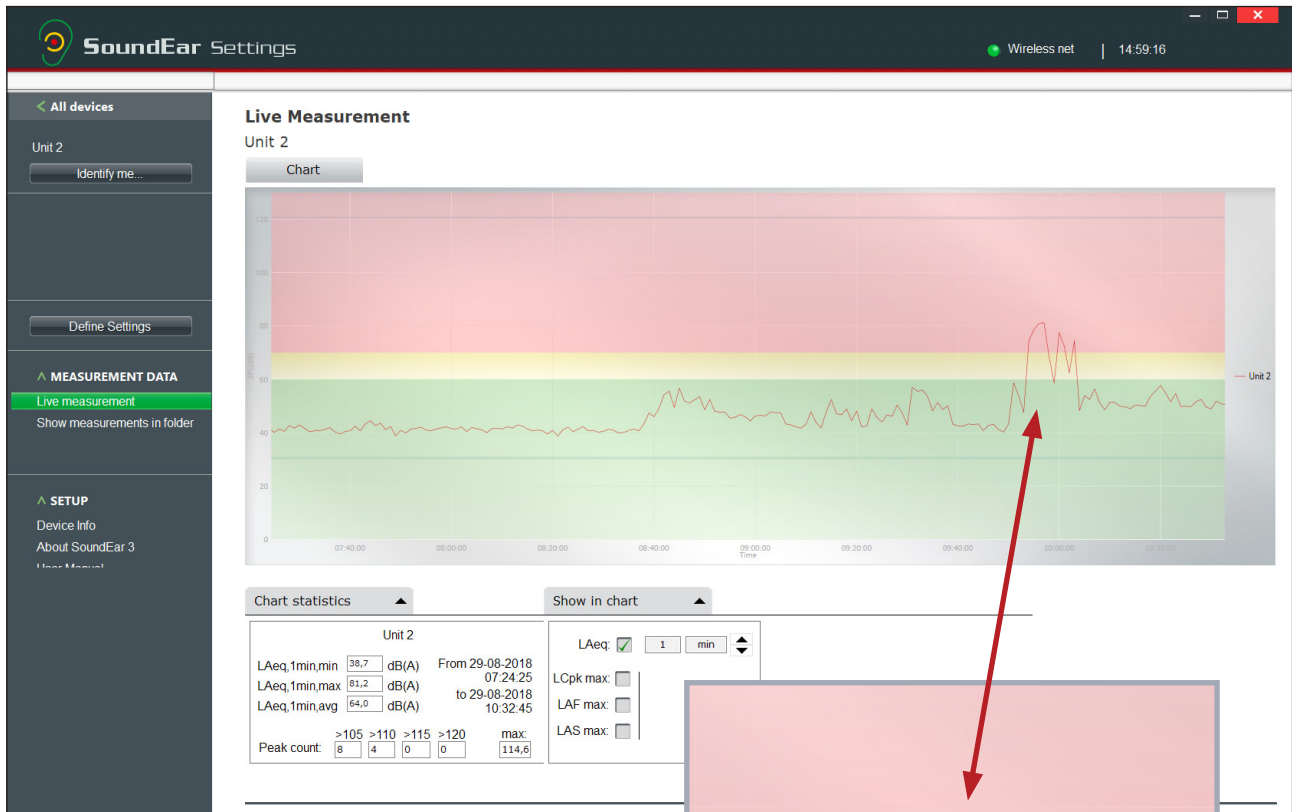


22

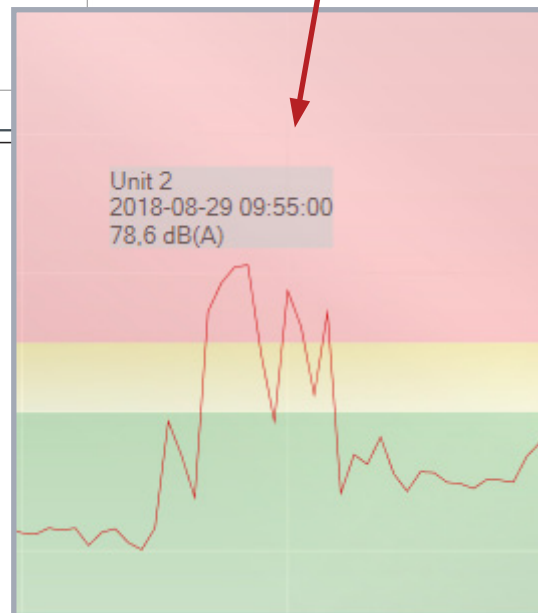
Alternatively, click on the menu 'Devices' and choose what device you want to see.



VIEW LIVE MEASUREMENTS FOR A SPECIFIC DEVICE



You can place the cursor over the graph to see the exact noise level measured at a certain time.

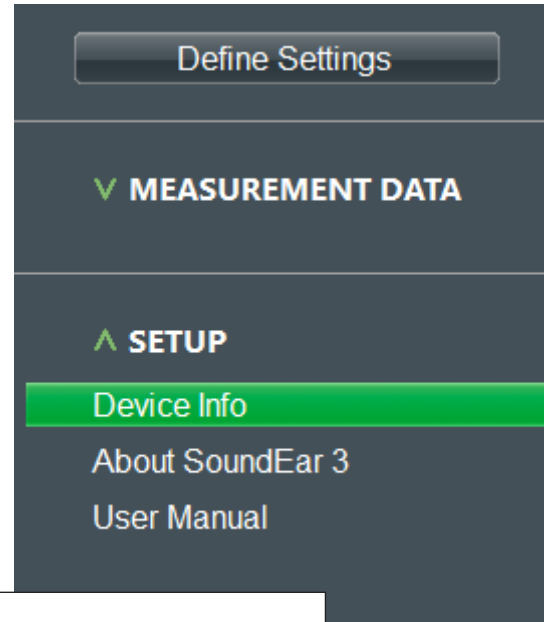


VIEW LIVE MEASUREMENTS

VIEW LIVE MEASUREMENTS FOR A SPECIFIC DEVICE

Go to 'SETUP' and select 'Device info' in the left side menu, to see the firmware version of the SoundEar®3 device.

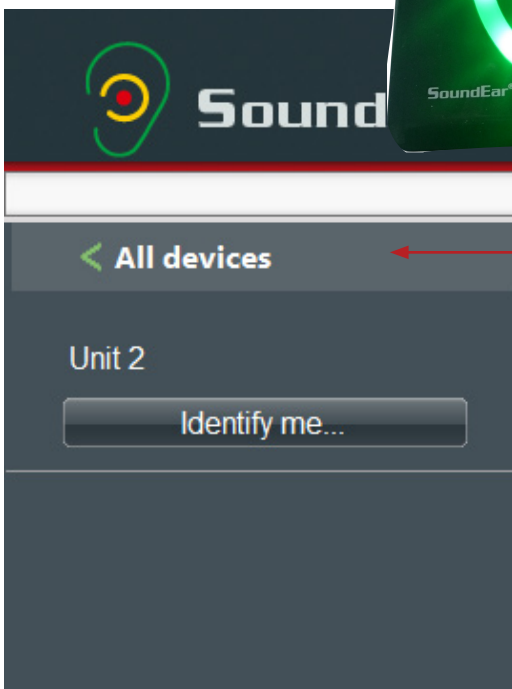
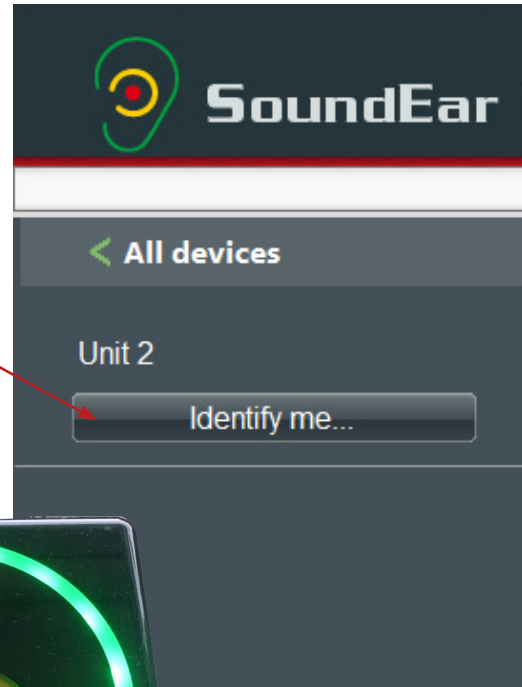
Here, you can see that the firmware version of the SoundEar®3 – 300 is version 1.8.7.

A white dialog box titled 'Device information' with a red arrow pointing to the 'Version' field. The dialog contains three input fields: 'Version' with the text 'SoundEar300 1.8.7', 'Name' with the text 'Unit 2', and 'Location' with the text 'Hall1'.

Device information	
Version:	SoundEar300 1.8.7
Name:	Unit 2
Location:	Hall1

VIEW LIVE MEASUREMENTS FOR A SPECIFIC DEVICE

If you are unsure what device you are configuring, click on 'Identify me...'. The mini display for that particular device will start to flash.



Click on 'All devices' in the top left corner to return to the main screen.

IMPORTANT: All measurement data is stored via the software. To collect and log measurements, the SoundEar® software must be up and running.

SYSTEM CONFIGURED IN ADVANCE

You may have chosen to have your whole system set up in advance.

In this case, all files are located on the SoundEar® USB key, ready to be imported by your software.

SoundEar Settings | Wireless net | 10:46:25

Wireless configuration [Stop listening]

Registered devices:

Id	Name	Uniquid
99	SoundEar Recei	56001E91
1	Unit 1	42004A-303551
2	Unit 2	4D0066-303551

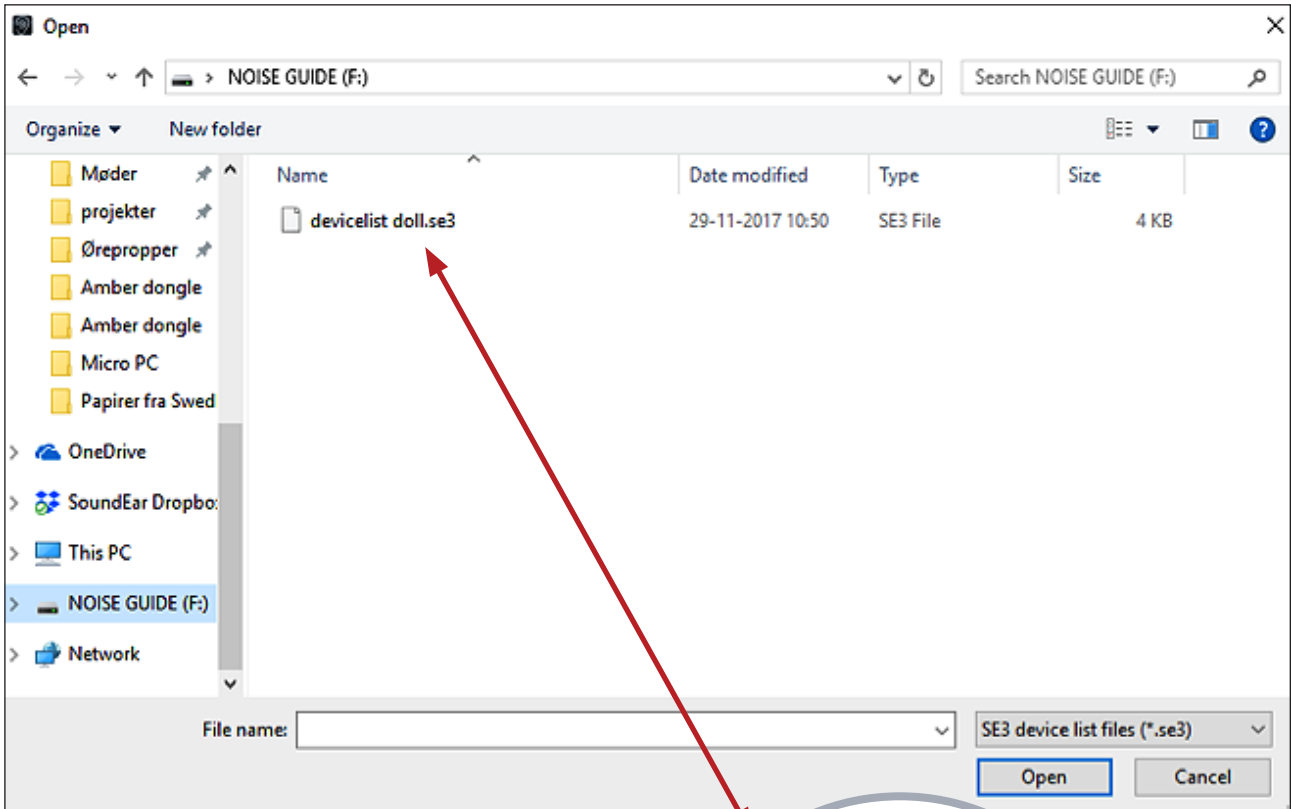
Currently online:

Id	Name	RSSI	MeasurementTime	LAeq1sMax	LCpeak	LAeq1min	LAeq15min	LAeq6
1	Unit 1	-45	24-08-2018 10:46	61,5	85,7	51,5	57,8	21
2	Unit 2	-51	24-08-2018 10:46	58	85,2	50,8	21	21

[Import device list] [Export device list]

[Disconnect cloud...]

1. Go to the menu 'Setup' and select 'Wireless'.
2. Click 'Import device list'.

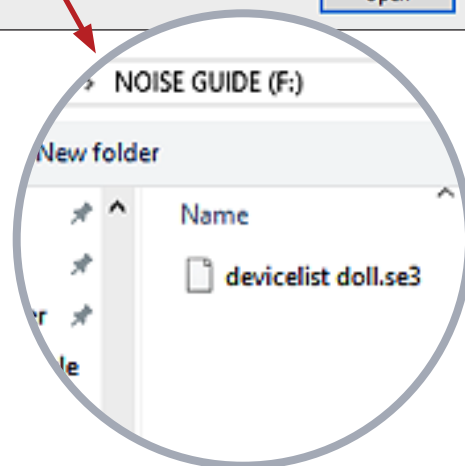


The device list is located on your SoundEar® USB key. The device list has the ending '.se3'.

Open the file; the software now imports the devices to your software.

NOTE! Importing a new device list will delete the existing device list.

When you have imported the device list, connect the receiving amber dongle to the PC and the transmitter dongles to the SoundEar®3 device(s).





SoundEar AVS

www.soundear.com



UK: The crossed-out wheeled bin means that within the European Union the product must be taken to separate collection at the product end of its life. This applies not only to your device but also to any enhancements marked with this symbol. Do not dispose of these products as unsorted municipal waste.